

Violin 1

# THE FIRST NOEL

Traditional English Carol ca. 17th Century

Jubilantly ♩ = 85

1  
*p*

8  
*mf*

15  
*f*

23  
*mf*

30

37  
*ff*

43  
*molto rit*

Violin 2

# THE FIRST NOEL

Traditional English Carol ca. 17th Century

Jubilantly  $\text{♩} = 85$   
8

8

14

14

22

22

30

30

38

38

43

43

molto rit 2

Double Bass

# THE FIRST NOEL

Traditional English Carol ca. 17th Century

Jubilantly  $\text{♩} = 85$   
**16**



22



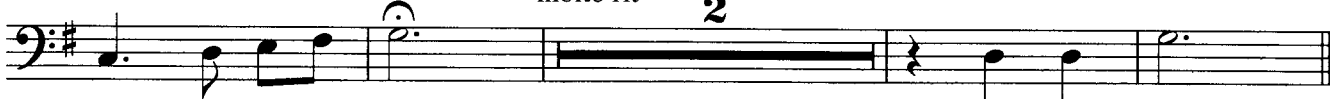
30



38



43



Piano

# THE FIRST NOEL

Traditional English Carol ca. 17th Century

Jubilantly  $\text{♩} = 85$

15

15

*f*

21

*mf*

28

35

*ff*

41

2

*molto rit.*

2